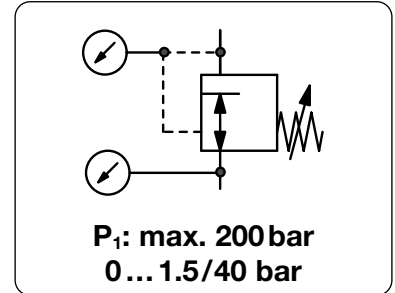


Description	High pressure regulator for gas cylinders for reducing pressure of compressed air or liquid gases from a high level to the required pressure.		
Supply pressure	max. 200 bar		
Media	compressed air, oxygen or different gases		
Connections	according to DIN 477 (Part 1)		
Adjustment	by T-handle		
Gauge port	All regulators are equipped with both one supply pressure gauge and one outlet pressure gauge.		
Leakage rate	10 ⁻⁸ mbar l/s		
Compensation	All regulators are equipped with supply pressure variation compensation, so that a change in supply pressure has no effect on the outlet pressure's stability.		
Temperature range	-30 °C to 60 °C / -22 °F to 140 °F		
Material	Body: brass	O-rings: NBR/Buna-N and EPDM	Spring cage: brass
	Diaphragm: 65NBR4550, PTFE for outlet > 10 bar, stainless steel for pure gases up to 5.0		



Dimensions			Version	Flow rate	Supply pressure	Pressure range	Order number
A	B	C	1-step	m ³ /h*2	l/min*2	max. bar	
mm	mm	mm	2-step			bar	

Cylinder pressure regulator 200 bar for compressed air, connections DIN 477, RH201/RH202 with inlet / outlet gauges

210	190	100	1-step	48	800	200	0 ... 10	RH201-00C
210	210	120		75	1250		0 ... 20	RH201-00D
				120	2000		0 ... 40	RH201-00E
240	190	100	2-step	8	133	200	0 ... 15	RH202-00A
				48	800		0 ... 10	RH202-00C



RH201, 1-step

Regulator for propane and acetylene connections DIN 477, RH201 with inlet / outlet gauges

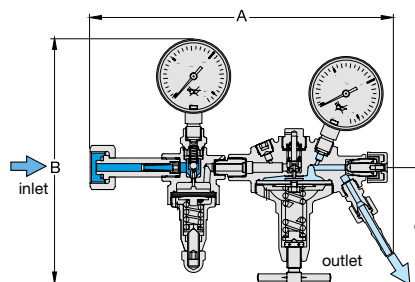
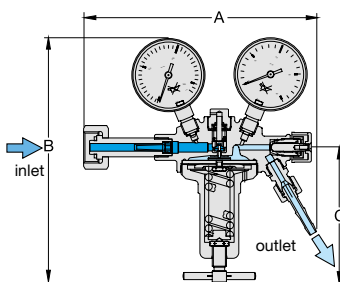
210	190	100	1-step	propane	C ₃ H ₈	max. 8	0 ... 4.0	RH201-00B16
210	190	100	1-step	acetylene	C ₂ H ₂	max. 26	0 ... 1.5	RH201-00A19

Special options, change the appropriate letter

carbon dioxide	CO ₂	RH20 .-... 03
inert gas		RH20 .-... 04
argon	Ar	RH20 .-... 05
fuel gas		RH20 .-... 06
nitrogen	N ₂	RH20 .-... 07
forming gas		up to 40 bar RH20 .-... 08
helium	He	up to 40 bar RH20 .-... 09
hydrogen	H ₂	RH20 .-... 11
testing gas		up to 40 bar RH20 .-... 12
oxygen	O ₂	up to 40 bar RH20 .-... 15
chrome-plated body	inside and outside	1-step RH201 -C...
chrome-plated body	inside and outside	2-step RH202 -C...
metal diaphragm	5.0 purity	1-step RH201 - .M...
		2-step RH202 - .M...



RH202, 2-step

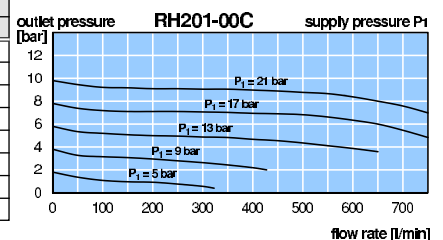


RH201-C..., chrome-plated

connection thread up to 200 bar		
gas type	inlet *1	outlet
compressed air	G ³ / ₈ m	G ¹ / ₄
oxygen	G ³ / ₈ f	G ¹ / ₄
inert gas	W21, 8x ¹ / ₄	G ¹ / ₄
CO ₂ / argon	W21, 8x ¹ / ₄	G ¹ / ₄
helium	W21, 8x ¹ / ₄	G ¹ / ₄
fuel gas	W21, 8x ¹ / ₄ LH	G ³ / ₈ LH
hydrogen	W21, 8x ¹ / ₄ LH	G ³ / ₈ LH
forming gas	W21, 8x ¹ / ₄ LH	G ³ / ₈ LH

connection thread up to 200 bar		
gas type	inlet *1	outlet
nitrogen	W24,32x ¹ / ₄	G ¹ / ₄
testing gas	M19x1,5 LH	G ³ / ₈ LH
nitrous oxide	G ³ / ₈	G ¹ / ₄
acetylene	clamp (cylinder)	G ³ / ₈ a LH

flow rate - correction factor	
gas type	factor
compr. air	1.00
oxygen	O ₂ 0.95
carbon dioxide	CO ₂ 0.81
hydrogen	H ₂ 3.80
argon	Ar 0.85
helium	He 2.70
propane	C ₃ H ₈ 0.80
nitrous oxide	N ₂ O 0.80



*1 Thread according to DIN 477, Part 1

*2 at supply pressure of 2x outlet pressure + 1 bar

only left hand thread is marked LH, right hand RH is not marked.

* Product group

